

METRO dateline

METRO weather In association with Tropicana

How to contact us

E-mail: news.london@ukmetro.co.uk
 picturedesk@ukmetro.co.uk
Text: *Views* to 65400
 (50p plus usual text charge)
Visit: metro.co.uk
Editorial: 020 3615 0600
Advertising: 020 3615 0570
Distribution: 020 3615 0660
Classified: 020 7938 3838

Find us...

Facebook.com/MetroUK
 Twitter.com/@MetroUK...or
 download our mobile apps

Corrections and clarifications

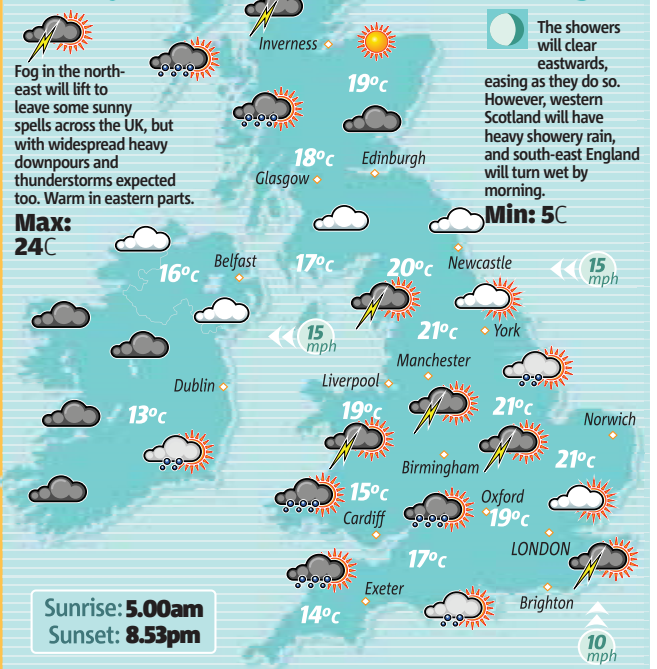
Following Friday's story that JustGiving, which hosted Stephen Sutton's cancer appeal, stood to make £180,000 from its success, the website has said its fees will be less than a quarter of that sum, pointing out that Teenage Cancer Trust benefits from a volume discount. Teenage Cancer Trust CEO Siobhan Dunn said: 'JustGiving has played a key role in enabling so many people to donate to Stephen's Story. To date, over 166,000 donations have been made, with many thousands happening at the same time. JustGiving increased their server infrastructure to unprecedented levels to keep the site up and running. They have done this seamlessly and we are enormously grateful for their support.'

Our story, Prehistoric prawn was dwarfed by its sperm, last Thursday, should have credited Renate Matzke-Karasz, of Ludwig-Maximilian University, as lead author of the paper, in Proceedings of the Royal Society B. See rspb.royalsocietypublishing.org/content/281/1786/20140394.abstr

The recycled paper content of UK newspapers in 2013 was 83.5%. Please keep public transport tidy by taking your Metro with you and recycling it.

Metro is independent of LUL and views expressed are not those of LUL or TfL unless otherwise stated.

Today

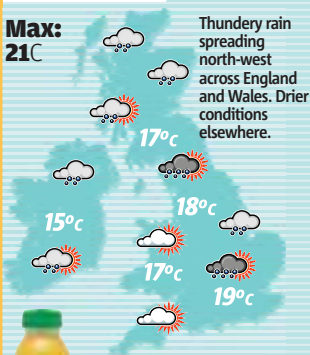


Tonight

The showers will clear eastwards, easing as they do so. However, western Scotland will have heavy showery rain, and south-east England will turn wet by morning.

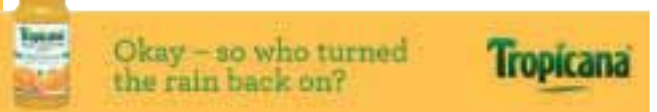
Hourly updates online at metro.co.uk/weather

Tomorrow



EUROPE today

Athens	24°C	Sunny
Barcelona	21°C	Partly cloudy
Berlin	26°C	Sunny
Brussels	26°C	Partly cloudy
Dublin	15°C	Thunderstorm
Geneva	24°C	Sunny
Madrid	18°C	Partly cloudy
Paris	22°C	Thunderstorm
Rome	23°C	Sunny



NOT ALL LOANS ARE BENDY

LIKE OUR FLEXIBLE LOAN

6.4% APR Representative

On personal loans £7,500-£25,000 over 1-5 years

- Make unlimited additional repayments and pay off your loan early, free of charge
- Enjoy the same flexibility, at different rates, on other loan amounts
- Available to Lloyds Bank customers who've held a current account with us for at least three months
- Or, if you have a mortgage, loan or credit card with us, you can apply in branch or by phone

In branch • 0800 068 1514 • lloydsbank.com



LLOYDS BANK

Lending is subject to status.

Available to UK residents aged 18 and over who meet the eligibility requirements. Lloyds Bank plc. Registered Office: 25 Gresham Street, London EC2V 7HN. Registered in England and Wales no. 2065. Lloyds Bank plc is authorised by the Prudential Regulation Authority and regulated by the Financial Conduct Authority and the Prudential Regulation Authority under registration number 119278. Calls may be monitored or recorded in case we need to check we have carried out your instructions correctly and to help improve our quality of service.

Most shared on Metro.co.uk

- Meet Sheila Vogel-Coupe - the 85-year-old granny prostitute
- Watch: Malaysian Flight MH370 movie trailer
- Sainsbury's apologises for slave mannequin stunt
- Ukip candidate defends swearing at protesters
- Convicted murderer on the run for the THIRD time arrested
- Thunderstorms to bring Britain's 25C heatwave to an abrupt end
- 'Heroin addict' sheep kill themselves by cracking their heads open



Who needs Mount Everest when you can conquer a wall cheered by tourists?

A dam long climb

by **DANIEL BINNS**

THESE daredevils haven't so much hit the wall as gone up and over it in the name of adventure.

They have turned the 165m (540ft) high Diga di Luzzzone dam in Ticino, Switzerland, into the Mount Everest of climbing walls.

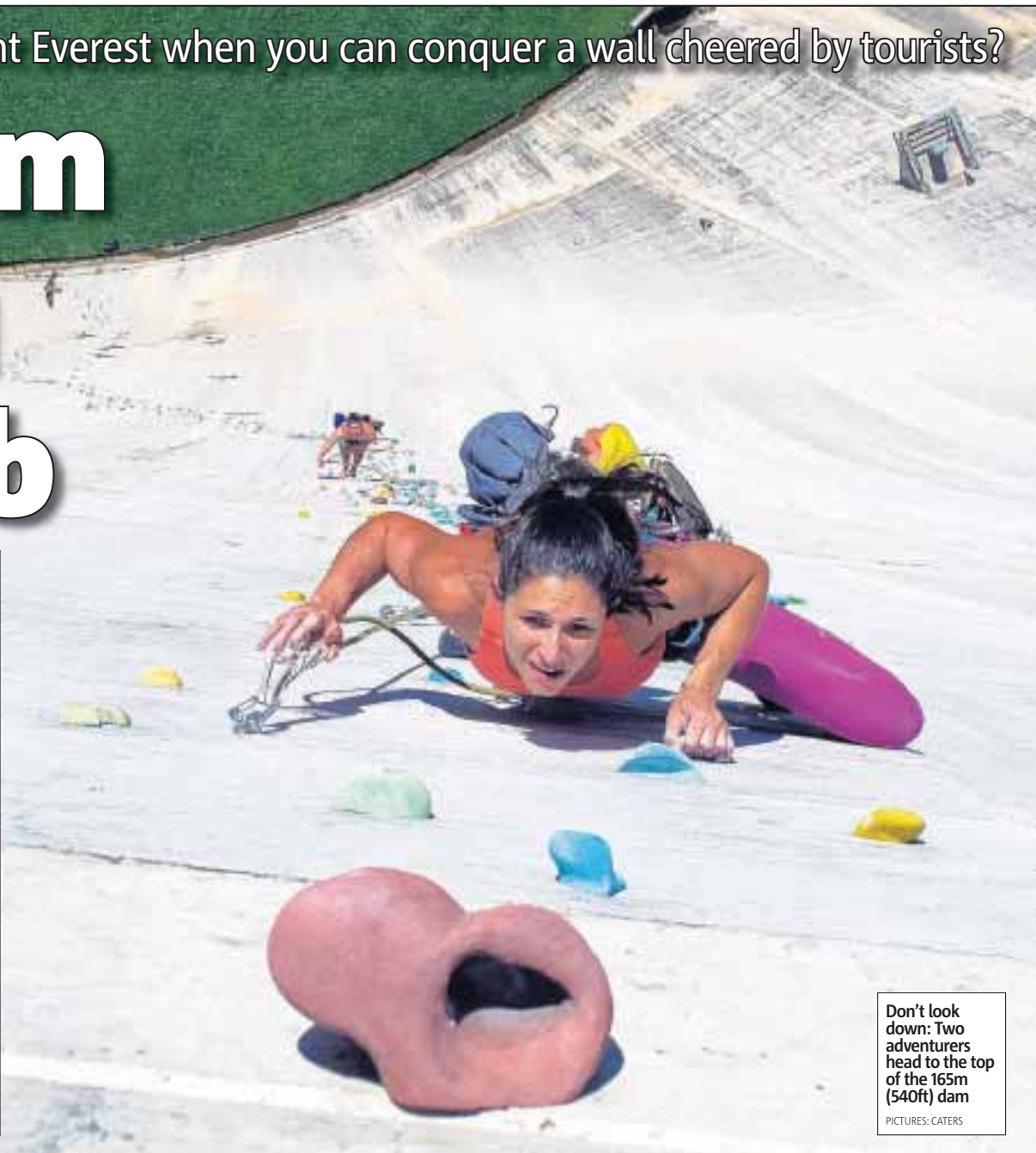
Climbers even need to use a ladder to get up the first 6m (20ft) of the wall.

German Ilana Marcus, from website Thrillseekers Anonymous, said: 'The climbing was very smooth and fun

'Topping out the climb to an audience of tourists watching your every move and perhaps anticipating the possibility of an exciting fall was memorable.'



Endurance: A climber nears the top



Don't look down: Two adventurers head to the top of the 165m (540ft) dam

PICTURES: CATERS



Let's say you pay in
£40

+



Your boss pays in
£30

+



And the tax relief is
£10

=



That's a total of
£80 for your pension*

Millions of workers are already benefiting from a workplace pension. Because when you pay in, your boss pays in too. It just makes sense. Search "workplace pensions." We're all in.

*This example is an illustration. Your employer will let you know the actual amounts that apply to your workplace pension.

